



Florida Department of Transportation

RICK SCOTT
GOVERNOR

3400 West Commercial Boulevard
Fort Lauderdale, FL 33309

MIKE DEW
SECRETARY

November 22, 2017

Dear Community Stakeholder:

RE: Alternatives Public Workshops
State Road 80 (Southern Boulevard) from US 27 to I-95
Palm Beach County, Florida
Financial Project ID Number: 435162-1-12-01

On behalf of the Florida Department of Transportation (FDOT) District Four, you are invited to an Alternatives Public Workshop, as part of our on-going State Road 80 Corridor Planning Study. The purpose of the workshop is to give interested persons an opportunity to comment and provide input on the alternatives and design concepts under evaluation. The goal of the corridor planning study is to develop a Corridor Action Plan that will recommend actions to be taken together by FDOT and local governments to protect and enhance the State Road 80 corridor.

Two workshops will be held on the dates, time and locations indicated below, where members of the study team and FDOT representatives will be available to discuss the alternatives, answer questions and receive comments.

December 5, 2017, 5:00 p.m. to 7:00 p.m.
Belle Glade Library
725 NW 4th Street
Belle Glade, FL 33430

December 6, 2017, 5:00 p.m. to 7:00 p.m.
Wellington Community Center
12150 Forest Hill Boulevard
Wellington, FL 33414

Public participation is solicited without regard to race, color, national origin, age, sex, religion, disability or family status. A flyer with additional information about the workshops and the study is attached.

Persons who require special accommodations under the Americans with Disabilities Act or persons who require translation services (free of charge) should contact Jessica Josselyn, Kittelson and Associates, Inc., at (954) 828-1730 or via email at jjosselyn@kittelson.com at least seven days prior to the meeting dates. If you are hearing or speech impaired, please contact us by using the Florida Relay Service, 1-800-955-8771 (TDD) or 1-800-955-8770 (Voice).

If you require further information, please do not hesitate to contact me at (954) 777-4653 or toll free at (866) 336-8435, ext. 4653, via e-mail at cesar.martinez@dot.state.fl.us, or visit the project website at www.SR80ActionPlan.com.

Sincerely,

Cesar Martinez, PE
Project Manager

Attachment: Public Workshop Flyer

www.fdot.gov



**SR 80
Corridor
Action Plan**
From US-27 to I-95

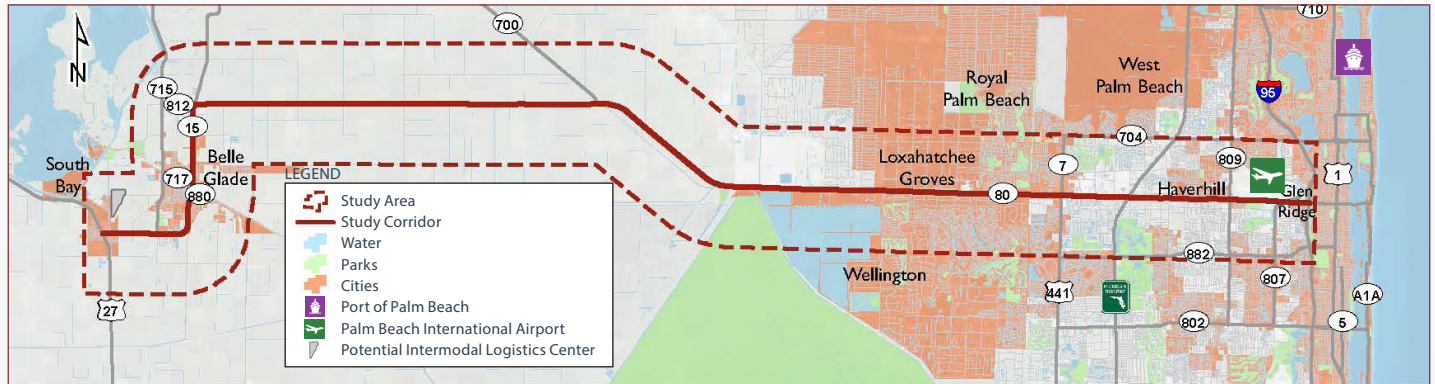
FINANCIAL PROJECT NO. 435162-1-12-01

ALTERNATIVES PUBLIC WORKSHOP

Come tell us what you think!

Please come share your ideas on the potential State Road (SR) 80 Corridor Action Plan alternatives/concepts.

CORRIDOR ACTION PLAN STUDY AREA MAP



About SR 80

SR 80 is a Cross-State Facility

SR 80 provides east/west connectivity across the state of Florida. Because of this, it plays a key role in moving people, freight, and goods.

SR 80 is Part of the Strategic Intermodal System

As part of the Strategic Intermodal System (SIS), SR 80 is a designated highway link in a system of key transportation facilities that are:

- **Strategic** - A network made up of high-priority transportation facilities and services of statewide and interregional significance;
- **Intermodal** - Contains all forms of transportation for moving both people and goods, including linkages that provide for smooth and efficient transfers between modes and major facilities; and
- **Systematic** - Integrates individual facilities, services, modes and linkages into a single, integrated transportation network.

SR 80 is the Primary Connection from Belle Glade to Downtown West Palm Beach

SR 80 serves as the primary connection between the western communities in Palm Beach County to the Port of Palm Beach and Palm Beach International Airport; is the main transportation connection for many of the cities and development west of SR 7; and facilitates overall regional mobility. SR 80 traverses nine municipalities in Palm Beach County - West Palm Beach, Cloud Lake, Glen Ridge, Haverhill, Wellington, Royal Palm Beach, Loxahatchee Groves, Belle Glade, and South Bay.

SR 80 is Impacted by New Development

Over 10,000 residential units and one million square feet of non-residential development are approved or proposed that could affect traffic volumes on SR 80. In spite of recent widening, cumulative effects of approved new development show estimated traffic volumes will exceed FDOT's adopted traffic operating standards for SR 80.

When & Where

Both meetings will be an open house style format with no formal presentation, so feel free to stop by and talk to us at anytime during the workshop hours.

December 5th, 2017

5pm to 7pm

Belle Glade Civic Center/Library

725 NW 4th Street

Belle Glade, FL 33430

December 6th, 2017

5pm to 7pm

Wellington Community Center

12150 Forest Hill Boulevard

Wellington, FL 33414



**SR 80
Corridor
Action Plan**
From US-27 to I-95

FINANCIAL PROJECT NO. 435162-1-12-01

ALTERNATIVES PUBLIC WORKSHOP

ABOUT THE ALTERNATIVES:

Alternatives/concepts have been identified to address existing and future transportation needs along SR 80. These alternatives include all modes of travel including walking, biking, riding transit, freight and driving. During the workshops, attendees will be able to discuss the alternatives one-on-one with the project team and provide feedback. Below is a brief overview of the different alternatives we are seeking feedback on along SR 80 from US-27 to I-95.

US-27 to Hooker Highway:

- Potential solutions identified in the South Bay and Belle Glade area include new pedestrian and bicycle facilities along and across SR 80; transit service improvements; new transit stations; better freight accommodations; transportation safety elements; and downtown Belle Glade beautification features.

Hooker Highway to 20-Mile Bend:

- Potential solutions include a regional greenway trail; a more in-depth assessment of transportation safety needs; resurfacing; and the rehabilitation of nearby County Road 880.

20-Mile Bend to Binks Forest Drive:

- Potential solutions include off-the-road pedestrian and bicycle facilities; and transit service improvements.

Binks Forest Drive to Royal Palm Beach Boulevard:

- Potential solutions include widening to 8 lanes; off-the-road pedestrian and bicycle facilities; and transit service improvements.

Royal Palm Beach Boulevard to Congress Avenue:

- Potential solutions include innovative signalized intersection treatments; partially or fully elevated roadways for through traffic with frontage roads for local access; parallel roadway network enhancements; off-the-road pedestrian and bicycle facilities; and transit service improvements.

For more information contact:

Cesar Martinez, P.E.

FDOT Project Manager, FDOT District 4 -
Planning and Environmental Management
Office

Phone: 954-777-4653

E-mail: Cesar.Martinez@dot.state.fl.us

Jessica Josselyn

Consultant Project Manager, Kittelson and
Associates, Inc.

Phone: 954-828-1730

E-mail: jjosselyn@kittelson.com

SR80ActionPlan.com

Public participation is solicited without regard to race, color, national origin, age, sex, religion, disability or family status. Persons who require special accommodations under the Americans with Disabilities Act or persons who require translation services (free of charge) should contact Mr. Cesar Martinez, PE, FDOT Project Manager, by phone at (954) 777-4653 or toll free at (866) 336-8435, ext. 4653, or by email at Cesar.Martinez@dot.state.fl.us at least seven days prior to the workshop. If you are hearing or speech impaired, please contact us using the Florida Relay Service: 1-800-955-8771 (TDD) or 1-800-955-8770 (voice).

For additional information about the project, you may contact Cesar Martinez, PE, FDOT Project Manager using his contact information listed above.

Para obtener información sobre este proyecto en español, contacte a Cesar Martinez, PE, FDOT, Gerente de Proyectos, teléfonos (954) 777-4653 o (866) 336-8435, ext. 4653, o al correo electrónico Cesar.Martinez@dot.state.fl.us

Pou enfòmasyon nan Kreyol, kontakte Cesar Martinez, PE, FDOT Manadjè Pwojè, pa telefòn nan (954) 777-4653 oswa rele li nan (866) 336-8435, ekst. 4653, oswa pa imèl nan Cesar.Martinez@dot.state.fl.us