



---

**\* District & Community Updates \***

---

**Thank YOU All!**

**VIRTUAL LEARNING**



[\[r20.rs6.net\]](http://r20.rs6.net)



[\[r20.rs6.net\]](http://r20.rs6.net)

Click on Image Above to [Play Video \[r20.rs6.net\]](#)

Dear Friend of Wellness,

These are quite challenging and delicate times we are living in since the Public Health Pandemic of COVID-19 has taken over our lives. On behalf of the District's Wellness Promotion Task Force (WPTF), we wanted to reassure each one of you, that you are not alone, and together we can overcome these challenges.

Every day we continue creating and embracing our **Whole School, Whole Community, Whole Child** (WSCC) Culture. We are blessed to live in such a caring county that focuses on lifting each other UP!

If you are in need of any assistance and/or support, please click the "**Let's Connect**" button on the right side to send us a message.

With kindest regards,

Paula

Click on Image Above to [Play Video \[r20.rs6.net\]](#)

### Welcome Back and Happy 2nd Week of Virtual Learning!

March 31, 2020 was the first day of distance-learning for all students of The School District of Palm Beach County. In the words of our Superintendent, Dr. Donald E. Fennoy, please do not confuse working from a distance with working alone.

We are all in this together! Do not be afraid of change as change is what makes us grow. It is important that we all maintain physical distancing right now because that is the safe and responsible thing to do. However, keep in mind to give love to one another.

Thank you to everyone that is making this new adventure a **SUCCESS!**

[Let's Connect](#)

## SCHOOL FOOD SERVICE

The School District of Palm Beach County continues its commitment to feeding our students while schools are closed. As of now, our School Food Service Department have served over **300,000+** meals since March 16th!

[This week of April 6th](#), we will continue distributing 'Grab and Go' bags filled with breakfast, lunch, supper, and a snack at the [35 school feeding sites \[r20.rs6.net\]](#) across Palm Beach County. Feeding sites will be open Monday through



Thursday. Those who come on Thursday, April 9th, to pick up meals will be receiving meals for both Thursday and Friday, April 10th. These feeding sites are always open from 11:00 a.m. - 1:00 p.m. for children 18 years of age or under (22 and under for ESE). The meals are available to families who drive, walk, or bike up.

**Then, beginning the week of April 13th and until further notice**, the 35 feeding sites will ONLY open to distribute meals on Monday, Wednesday, and Friday. On those days, we will be giving two (2) lunches and two (2) suppers to each student to cover meals for two consecutive days.

**IMPORTANT NOTE:** A child no longer needs to be present in the car to receive a meal. Parents only need to show a form of identification for their child (e.g. student ID, library card, passport, or a picture with the adult and the children, etc).



*\* Please be aware that the school meals provided, along with the Family Meal boxes/bags may contain allergens and we ask those adults picking up the food to be diligent to ensure they do not take food if allergies may be a concern for your family.*





Check out this one message of the many we have received: *"I just wanted to take a moment to thank the District for all the work that you are undoubtedly doing to help feed children, and families while school is out. It's such an important part of keeping families healthy in body and mind during this time of uncertainty. While I don't know if any GOTR girls and families are participating in the meals program, I'm comforted to know that it is available to them,"* said Ms. Diane Evans, Executive Director of Girls on the Run (GOTR) Palm Beach County.

## FEEDING SOUTH FLORIDA

In addition to the "Grab and Go" meals, The School District of Palm Beach County has partnered with [Feeding South Florida \[r20.rs6.net\]](http://FeedingSouthFlorida[r20.rs6.net]) to provide our students going through the meal pick-up line with a Family Meal Box or Bag since the week of March 16th at all of the open feeding sites.

Everyone is going above and beyond in such delicate times and together we have lifted **UP** our community with over **28,000+** boxes/bags of food. Our community has really stepped up to support our families.



## LET'S MOVE CHALLENGE

The Palm Health Foundation (PHF) has extended its March 2020 month-long [Let's Move: Commit to Change Physical Activity Challenge \[r20.rs6.net\]](http://www.LetsMovePBC.org) beyond its original end date of March 31, 2020. Emphasizing the importance of exercise for good physical and mental health for our staff, students, and their families during the COVID-19 outbreak, the foundation is continuing the campaign through Sunday, May 31, 2020.

[PALM HEALTH FOUNDATION PRESS RELEASE \[r20.rs6.net\]](http://www.LetsMovePBC.org)



[\[r20.rs6.net\]](http://www.LetsMovePBC.org)



[\[r20.rs6.net\]](http://www.LetsMovePBC.org)

**WHAT THE WORLD NEEDS NOW...Is LOVE sweet LOVE!**

**[r20.rs6.net]**

Click on the image above to watch a beautiful video...

Students at the Boston Conservatory at Berklee created a social distancing rendition of 'What the World Needs Now is Love' and its amazing!

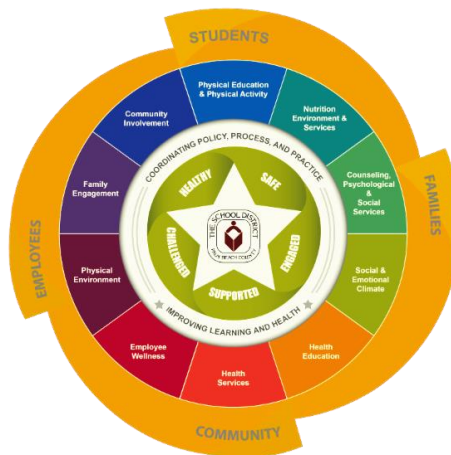
[Visit our Coronavirus Website \[r20.rs6.net\]](https://www.r20.rs6.net)



[\[r20.rs6.net\]](https://www.r20.rs6.net)

JOHNS HOPKINS  
UNIVERSITY & MEDICINE

[\[r20.rs6.net\]](https://www.r20.rs6.net)



[\[r20.rs6.net\]](https://www.r20.rs6.net)

The District's **Wellness Promotion Task Force (WPTF)** [\[r20.rs6.net\]](https://www.r20.rs6.net) purpose is to create an educational forum that allows students, staff, parents, community partners, and members of the public to successfully collaborate in the promotion of healthier lives. With the District's ultimate goal of improving student performance, the direction of the Wellness Promotion Task Force is to encourage a proactive approach to holistically address the health, wellness, and safety of all school children and staff.

**Paula Triana, RDN, LDN**

Manager - Wellness Promotion  
District's Wellness Promotion Task Force  
The School District of Palm Beach County  
School Food Service Department  
3661 North Interstate Park Road, Suite #100  
Riviera Beach, Florida 33404  
Office Phone: (561) 383-2026  
Cell Phone: (561) 253-5583

Email: [paula.triana@palmbeachschools.org](mailto:paula.triana@palmbeachschools.org)

**Frances Rosier**

Analyst - Wellness Promotion  
District's Wellness Promotion Task Force  
The School District of Palm Beach County  
School Food Service Department  
3661 North Interstate Park Road, Suite #100  
Riviera Beach, Florida 33404  
Office Phone: (561) 882-1931

Email: [frances.rosier@palmbeachschools.org](mailto:frances.rosier@palmbeachschools.org)

---

Under Florida law, e-mail addresses are public records. If you do not want your e-mail address released in response to a public records request, do not send electronic mail to this entity. Instead, contact this office by phone or in writing.