



FEBRUARY 2016 LORHN

Edition

## IN THIS ISSUE

Health Insurance Marketplace Open Enrollment Snapshot

Reducing Health Care Costs Through Early Intervention On Mental Illnesses

DO I HAVE PREDIABETES? Take a Brief Risk-Test

Obama Administration Announces Major Investments in Preventing Child Hunger

(HEARTH): Defining 'Chronically Homeless' Final Rule

White House Rural Council's *Local Foods, Local Places*

Legislation: CS/SB 760 Healthy Food Financing and CS/HB 7087

Telehealth

Rural Hospitals and Medicaid Non-Expansion States

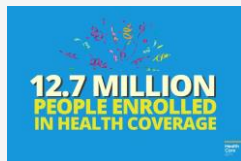
Four Maps of American Health Challenges

*Taking Stock - Rural People, Poverty, Housing in the 21<sup>st</sup> Century*

FUNDING & AWARD OPPORTUNITIES

Spotlights- Webinars, Conferences, Research, Resources, Facts...

### Health Insurance Marketplace Open Enrollment



Open Enrollment for the Health Insurance Marketplace, for 2016 coverage, ended January 31, with about 12.7 million plan selections made.

Of this, over 9.6 million were selected through the HealthCare.gov platform, and 3.1 million selected through State-based Marketplaces. [See the Snapshot here](#)

### Health Care Costs & Mental Health Intervention

#### Webinar

#### **Models & Components of Great Nonprofit Dashboards**

**February 17 2:00 pm ET**

For nonprofit board members & executives re: value & components of dashboards.

[register](#)

*The Nonprofit Quarterly*

#### Webinar

#### **What does the 2017 Budget Mean for Rural Housing?**

**February 17 2:00 pm ET**

Proposed administration's



'Reducing Health Care Costs Through Early Intervention On Mental Illnesses' refers to research recently published in

*Health Affairs*, which found, among Canadian health care patients, an average cost for a mental health high-cost patient roughly 33% greater than other high-cost patients. This commentary states that, in the U.S., mental disorders frequently rank among the highest in direct medical spending, and makes a compelling case for earlier identification and intervention to address mental illnesses, to save costs - and human lives. [View here](#)

### [Do I Have Prediabetes? Take a Brief Risk-Test](#)



1-in-3 American adults have prediabetes, when blood glucose levels are higher than normal, but not high enough for a Type 2 diabetes diagnosis. Persons with prediabetes may develop Type 2 diabetes, and are at increased risk for stroke, heart disease, etc. Prediabetes often can be reversed through lifestyle changes related to physical activity and weight. **Do you have prediabetes? Take a risk test [here!](#)**

### [Obama Administration - Preventing Child Hunger](#)



The White House hosted a conversation about child hunger in America, with experts and direct service providers discussing how "hunger continues to harm children across the country". Participants discussed the role of the Supplemental Nutrition Assistance Program (SNAP) and other core nutrition programs, their role in reducing food insecurity and poverty, and consequences when benefits are less than necessary to sustain a family to the end of the month.

**Federal Actions [here](#) January 27th**

budget effect upon rural housing programs.

[register](#)

*Housing Assistance Council*

### [Webinar](#)

#### **Scenic Route: Getting Started With Creative Placemaking in Transportation**

**February 17 3:30 pm ET**

Exciting placemaking projects across the country.

[register](#)

### [Webinar](#)

#### **Health Care Quality Information**

**February 18 2:00 PM ET**

AHCA's tutorial on accessing health quality information on FL hospitals, providers, plans.

[register](#)

*Florida CHAIN*

### [Webinar Series](#)

#### **Promoting Healthy Eating & Active Living**

**February 18 4:00 pm ET**

Region VIII Federal Partners' National Prevention Strategy shifts focus from disease to prevention & wellness.

[info here](#)

### [HPOE Webinars](#)

#### **Hospitals in Pursuit of Excellence**

**February 23 Noon ET**

'Going Beyond REaL Data Collection: Collecting Social Determinants of Health'

[register](#)

[Video here](#)

### [HEARTH: Rule on Defining Chronically Homeless](#)



HUD posted the recording and accompanying materials from the Defining 'Chronically

Homeless' Final Rule regional webinars. These webinars, held in January 2016, introduced communities and stakeholders to the history of the definition of chronically homeless, the rationale for and the major changes implemented in the Final Rule, and associated recordkeeping requirements for documenting chronic homelessness.

[Access here](#)

### [WH Rural Council 'Local Foods Local Places'](#)



On behalf of the White House Rural Council, federal agencies joined together to announce the selection of 27 communities in 22 states that will participate in

*Local Foods, Local Places*, a federal initiative to help communities increase economic opportunities for local farmers and promote wellness, by improving access to healthy local food. [View announcement here](#)

### [Legislation: Healthy Food Financing & Telehealth](#)



**CS/SB 760 Healthy Food Financing** FL Senate Agriculture Committee approved

legislation that would direct the state to offer financial incentives for grocery stores and other healthy food retail establishments to locate or expand in underserved communities. Eligible stores would be required to space allocate at least 30% for perishable fruits, vegetables. [Track here](#)

### [Webinar](#)

**Secrets of Success for the Health Care Team & Community Health Workers**

**February 23 1:00 pm ET**  
Science-based information to improve diabetic care, prevention for at-risk.

[register](#)

### [Webinar](#)

**Social Impact Investing for Better Health**

**February 25 1:15 pm ET**  
Leveraging new financial mechanisms to support your neighborhood-level work.

[register](#)

*Network Commons*

### [Webinar](#)

**Homelessness as a State of Emergency**

**March 9 1:00 pm ET**  
Policy decisions in areas declaring homelessness as a state of emergency (SOE).

[register](#)

### **StellarEd Solutions**

*Suwannee River AHEC*

Online portal for professional education. **CE/CME credits available**

[click to view](#)

### **Agency for Healthcare Research & Quality**

**CME/CE activities & presentations from patient centered outcomes research.**

[click to view](#)

**CS/HB 7087 Telehealth** House Health Care Appropriations Subcommittee passed measures aimed to increase the use of "telehealth" to remotely provide medical services, and offer greater transparency in health care costs. In part, the bill would allow out-of-state health care providers to use telehealth for Florida patients if providers register with the state. **Track [here](#)**

### **Rural Hospitals: Medicaid Non-Expansion States**



*'Uncompensated Care Burden May Mean Financial Vulnerability For Rural Hospitals In States That Did Not Expand*

*Medicaid'* describes amounts of uncompensated care provided by rural hospitals in the year before any state Medicaid expansions. Researchers found higher dollar values of unrecoverable debt and charity care in noncritical access rural hospitals in nonexpansion vs. expansion states. Compared to hospitals in expansion states, those in nonexpansion states provided greater amounts of uncompensated care as a percentage of revenues. **Review findings and discussion [here](#)**

### **Four Maps of American Health Challenges**



Four maps explore the health challenges that permeate the United States, depicting how *place* plays a pivotal role in: Education and Health; Access to Health Care; Linking Obesity and Diabetes; and Poverty and Health. **See the 'Community Commons' interactive maps [here](#)**

### **21st Century - Rural People, Poverty, Housing**

#### **Resource**

#### **Community Commons**

Public access to data for community health mapping & reporting capabilities.

**[here](#)**

#### **Resource**

#### **The Nation's Health**

Public health news in state legislatures, nation's capital & on a global scale.

**[here](#)**

**American Public Health Association**

#### **Resource**

#### **Infographics**

Infographics depict contributors to obesity, cost, burden, etc.

**[here](#)**

#### **Resource**

#### **Effective Health Care Program**

Compiles research findings & translates into formats for various audiences.

**[here](#)**

**Agency for Healthcare Research & Quality**

#### **Resource**

#### **The Rural Data Portal**

U.S. communities' social, economic & housing characteristics.

**[here](#)**

#### **Research**

#### **Food Research & Action Center (FRAC)**

#### **Obesity and Poverty Edition**

Focus on obesity, income,



The Housing Assistance Council (HAC), since the 1980s, has prepared an updated *Taking Stock* every 10 years, following the release of decennial Census data. HAC presents their newest edition, using data from the 2010 Census and American Community Survey (ACS), to describe the social, economic, and housing characteristics of rural Americans. [Review here](#)

### **SOURCES for OPEN FUNDING OPPORTUNITIES**

[SAMHSA](#) Substance Abuse & Mental Health Services Administration grant and award announcements [here](#)

['Available Funding'](#) Searchable database of funds, grants for healthy food access projects [here](#)

[RHI Hub-formerly Rural Assistance Center](#) Posts funding opportunities by type, topic, state [here](#)

[HRSA All Open Opportunities](#) Grants to improve and expand health care services for underserved people [here](#)

[All Federal Grants Search](#) Government grants by key word, funding opportunity number, category, agency [here](#)

[National Academy for State Health Policy](#) [here](#)



### **FUNDING & AWARD OPPORTUNITIES**

If featured opportunities have been helpful, [let us know here...!](#)

### **Rural Scholarships Obstetrical Simulation Course**

Two-day courses at Center for Advanced Medical Learning and Simulation (CAMLS), using presentations and simulations to develop an understanding of high risk, low frequency obstetrical emergencies. Scholarships available to Family

food insecurity, federal nutrition programs & policy. [here](#)

### **Research**

#### **Braiding & Blending Funding Streams to Meet Health-Related Social Needs of Low-Income Persons**

Supporting needs outside clinical health care scope.

[here](#)

### **Florida Kidcare**

#### **Kids Oughta be Covered!**

Applications accepted year round for ALL qualified Florida children.

[click to apply!](#)

### **Enroll America/Get Covered America**

Connects to resources and information about health insurance options.

[Digital Interest Card](#)

### **Conference**

#### **Association for Community Health Improvement**

March 1-3, 2016

Baltimore, MD

*'From Health Care to Healthy Communities'*

[register](#)

### **Conference**

#### **9th Annual National Conference on Health Disparities**

March 9-12, 2016

Practice/Family Medicine physicians, Certified Nurse-Midwives (CNMs) and Licensed Midwives serving *rural* populations in SE U.S. [Announcement here](#)

### [AstraZeneca HealthCare](#)

#### [Foundation Grants](#)

*Connections for Cardiovascular Health* funds community-based innovative programs, for the underserved, that improve cardiovascular health via culturally appropriate approaches, with measurable outcomes. **Deadline February 25 by 5 pm ET** [Guidelines here](#)

### [ArtPlace America](#)

Fund invests in projects for U.S. communities of every size in which artists/art organizations address challenges of agriculture/food, economic development, education/youth, environment/energy, health, housing, immigration, public safety, transportation, workforce development. **Register by February 16; due March 2, 3:59 pm ET** [Application here](#)

### [Miracle-Gro Community Garden Project Grants](#)

Fosters development of gardens & green spaces that involve and engage the neighborhoods, with grants up to \$1,500. **Deadline February 22** [Application here](#)

### [Culturally-Specific Services for Violence Victims](#)

*Office on Violence Against Women* grants to 'Enhance Culturally-Specific Services for Victims of Sexual Assault, Domestic Violence, Dating Violence and Stalking', in support of community-based services to effectively address barriers. **Deadline February 24** [Announcement here](#)

### [Home Depot Foundation Veteran Housing Grants](#)

Supports nonprofits nationwide that address the development and repair of veterans' housing. Grants for single family, multifamily, permanent supportive and transitional housing. **First 2016 deadline February 24.** [Guidelines here](#)

### [Home Depot Foundation Community Impact](#)

Washington, DC  
*'Reducing Health Disparities Through Sustaining & Strengthening Healthy Communities'*  
[register](#)

[Local Conference](#)  
**Southeast AIDS Education & Training Center**  
**HIV/AIDS Symposium**  
April 8, 2016  
Coral Gables, FL  
Overview: State of the Field  
[register](#)

[Rural Summit](#)  
**Florida Rural Health Association**  
April 28 & 29, 2016  
St. Petersburg, FL  
FRHA's 22nd Annual Rural Health Educational Summit  
[more here](#)

**Community Meetings**  
[Martin County InterAgency Coalition](#)  
2nd Wednesdays, 8:30 am  
CSC/Martin Cty., Stuart  
[Indiantown InterAgency Coalition](#)  
2nd Thursdays, 8:30 am  
Seminole Inn, Indiantown  
[Glades P.A.T.C.H.](#)  
3rd Tuesdays, 9:00 am  
Glades Initiative, Belle Glade  
[Glades Interagency Network](#)  
3rd Tuesdays, 11:00 am  
West Tech, Belle Glade  
[Shared Services Network of Okeechobee](#)  
4th Tuesdays, 10:00 am  
School Board Office, Okeechobee  
[Community Health Advisory Team Meeting](#)  
February 16th, 2:00 pm  
FL DOH, 1728 NW 9th Ave, Okeechobee



Grants up to \$5,000 support costs associated with projects utilizing volunteers in community improvement activities. More competitive proposals identify projects for veterans, e.g. housing repairs, modifications and weatherization. Applications accepted on an ongoing basis. [Apply here](#)

### **HRSA - Rural Health Care Improvement**

The Small Health Care Provider Quality Improvement Program provides support to rural primary care providers for planning and implementation of quality improvement activities. **Deadline March 4.** [Information here](#)

### **USDA Distance Learning & Telemedicine Grants**

Telecommunication grant program for rural communities to overcome remoteness and low population density. Funds for eligible capital assets, instructional programming, technical assistance/instruction. Min. 15% match required for awards. **Deadline to March 14.** [Application here](#)

### **US Conference of Mayors CommunityWINS Grant**

U.S. Conference of Mayors and Wells Fargo Foundation partner to invest in neighborhood revitalization, economic development, job creation in varied-size municipalities. Must involve collaboration between/application by mayors offices and nonprofits, with additional community, private and other sector partners. **Deadline March 18.** [Application here](#)

### **Hillman Foundation Innovations in Care Program**

Accepting proposals for patient/family centered approaches that challenge conventional strategies, improve health outcomes for vulnerable populations, lower costs and enhance the caregiver experience, particularly in areas of maternal/child health, care of older adults, etc. Eligible applicants include institutions, care settings and practitioners across a diverse spectrum. Two grants up to \$600,000 will be awarded. **Deadline March 21.** [RFP here](#)

### **Hendry Glades**

### **Community Resource**

March 15th, Noon, Hendry Regional Medical Center, Clewiston



### **LORHN Board of Directors**

#### **Chair**

Jacqueline Lobban-Marsan

#### **Vice Chair**

Dr. Michael Gervasi

#### **Treasurer**

R. D. Williams

#### **Secretary**

Ellen Geake

#### **Past Chair**

Traci Owens

+++++

Sandra Chamblee

Darcy Davis

Karlette Peck

Diane L. Walker

#### **Executive Director**

Andrea Stephenson

**HRSA Telehealth Network Grant Program**

To demonstrate how telehealth networks expand access to, coordinate and improve health care services, training of health care providers and/or quality of health information available to health care providers and patients. Telehealth services through School-Based Health Centers encouraged, for high poverty rural areas. **Technical assistance webinar February 29 Deadline April 8. Opportunity [here](#)**

**Mary Kay Foundation DV Shelter Grant Program**

Each year, the Foundation awards a grant to at least one domestic violence shelter in every state that applies. Any remaining funds are distributed based on state population. 2016 applications available for **submittal to April 30 [here](#)**

**Let's Get Grant-Ready!**

**Invite LORHN to your grant-writing 'table' to:**

- locate and match potential funding sources, fiscal agents, partners
- research best-practices & predictive models tailored to local need
- develop results-based strategies, program activities, and outcomes/impacts.

**Lake Okeechobee Rural Health Network (LORHN)  
600 Sandtree Drive, Ste. 101, Palm Beach Gardens, FL 33403**

**Contact us at 561.844.4220 ext. 1600  
or via  
[www.lorhn.org](http://www.lorhn.org)**

**The mission of Lake Okeechobee Rural Health Network (LORHN) is to improve access to quality health care for rural residents of Glades, Hendry, Martin, Okeechobee and Palm Beach Counties and stimulate the financial viability of providers and communities within the network through planning and coordinated utilization of limited health care.**